



MONTHLY MEMBERSHIP PROGRESS REPORT

District A 3

Results as of: 11/30/2018

GMT: CHRIS LEWIS

LOCATION ONTARIO

GMT CA

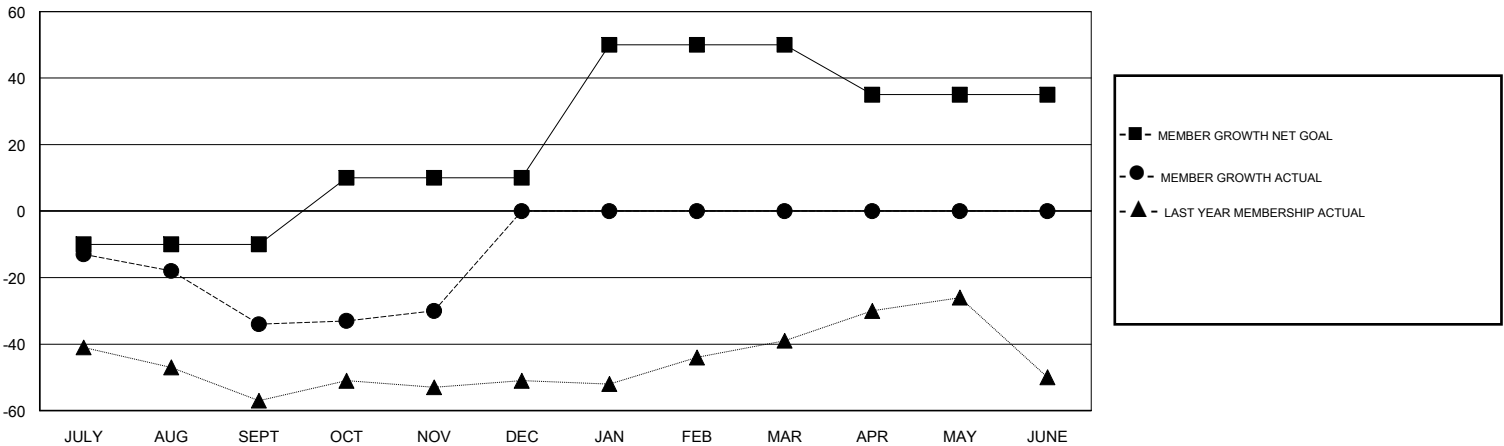
| Clubs | | | |
|-----------------------|---------------|-----------|---------------|
| RESULTS FOR 2018-2019 | | | |
| QUARTER | NEW CLUB GOAL | NEW CLUBS | DROPPED CLUBS |
| JULY/AUG/SEPT | 1 | 0 | 0 |
| OCT/NOV/DEC | 0 | 0 | 0 |
| JAN/FEB/MAR | 0 | 0 | 0 |
| APR/MAY/JUNE | 0 | 0 | 0 |

| Members | | | |
|-----------------------|------------------------|----------------------|--|
| RESULTS FOR 2018-2019 | | | |
| QUARTER | MEMBER GROWTH NET GOAL | MEMBER GROWTH ACTUAL | DROPPED MEMBERS ACTUAL (including transfers) |
| JULY/AUG/SEPT | -10 | 14 | 42 |
| OCT/NOV/DEC | 20 | 40 | 31 |
| JAN/FEB/MAR | 40 | 0 | 0 |
| APR/MAY/JUNE | -15 | 0 | 0 |

GOALS AND ACTUAL NEW CLUBS CUMULATIVE



GOALS AND ACTUAL MEMBERS CUMULATIVE



| |
|------------------|
| DROPPED CLUBS: 0 |
|------------------|

18 CLUBS OF 50 ADDED 1 OR MORE NEW MEMBERS

| GENDER DISTRIBUTION | |
|---------------------------------------|--------------|
| MALE | 785 (61.81%) |
| FEMALE | 485 (38.19%) |
| Women Percentage Fiscal Year Goal: 4% | |

| DROPPED MEMBERS | |
|-----------------|-----------|
| DECEASED | 12 |
| CLUB CANCELLED | 0 |
| OTHER | 61 |
| TOTAL | 73 |

[CLICK HERE FOR CUMULATIVE MEMBERSHIP DATA](#)

| | |
|---------------------------------|-----|
| TOTAL FAMILY UNIT MEMBERS | 346 |
| FAMILY MEMBERS PAYING HALF DUES | 179 |